



# Cure<sup>®</sup> INNOVATION INDEX

**The Cure Innovation Index is the first data-driven framework to measure how effectively U.S. biomedical institutions translate scientific discoveries into cures**

**The Index establishes a new evidence-based standard for actionable healthcare intelligence**

It assesses the structural, operational, and cultural factors that enable top research institutions to translate science to cures that deliver clinical and commercial impact. No longer are isolated components, such as funding levels, scholarly outputs, and patent counts, enough to benchmark the U.S. research ecosystem.

The Index reveals a consistent pattern: Institutions that lead in translational performance combine scientific excellence with strong commercialization infrastructure, deep industry engagement, and an embedded entrepreneurial culture.

Built on objective, verified data, the Index identifies the top 303 institutions, after considering more than 6,000 nationwide. The Index's powerful data platform delivers institution-specific peer benchmarking, gap analyses and recommendations to improve performance and strengthen outcomes.

## **Ranked: 303 Top-Performing U.S. Biomedical Institutions**

- 243 Universities
- 60 Institutes and Centers
- 20 institutions punching above their weight
- Regional and state ranks, spanning all 50 states, DC, and Puerto Rico

The Index separately ranks universities from institutes and centers to reflect differences in their structures and missions.

### **About Cure**

Cure is the premier healthcare innovation ecosystem that provides knowledge, infrastructure and tools to accelerate progress toward cures. Headquartered in New York City, Cure convenes all key stakeholders for innovation across its physical and digital community. The campus houses flagship event venues and is home to healthcare organizations from idea stage to public companies. Cure members gain access to premium opportunities and curated connections. In 2026, The Cure Innovation Index was published, providing unmatched visibility into how research institutions translate breakthrough science into real-world health impact. Innovate with Cure at [wewillcure.com](https://www.wewillcure.com).

## Why Translational Research Matters Now

U.S. biomedical institutions operate in a rapidly shifting environment that demands measurable real-world outcomes

Most institutions have no unified framework to assess their research enterprise. Existing tools lack the power to diagnose how a full translational pipeline performs or where it breaks down. They ignore measurable returns on investment that matter: commercialization, partnerships, clinical progress, and real-world health outcomes for patients.

The Index fills this need for Healthcare Innovation Intelligence that provides institutional leaders, investors, policymakers, and investigators with a consistent, objective, evidence-based foundation for decision-making.

### Increasing focus on commercialization:

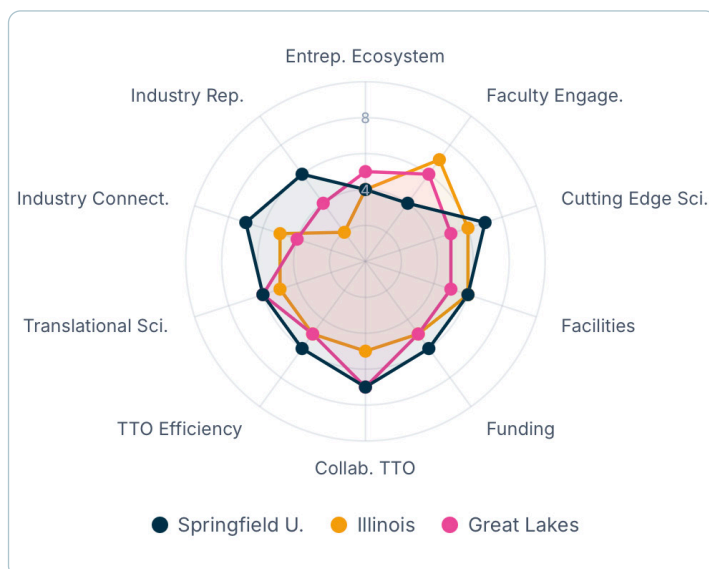
- Federal funders prioritize translational performance alongside research output.
- Boards and donors demand clearer economic and societal returns on R&D investments.
- Industry partners and venture capitalists intensify technology transfer activities.
- Global competition in healthcare innovation is escalating.

## What the Index Measures

Compare against your peers on what matters most

Your institution's rank is based on a composite Cure Innovation Index score. The proprietary calculation of this score evaluates your institution's performance across three core domains: **Research Capabilities**, **Entrepreneurial Readiness**, and **Market Translation**, comprised of **25 indicators across 10 subdomains**.

The Index maps your institution's domain, subdomain and indicator performance against the benchmark group of your choosing using interactive, customizable visualizations for deep dives. The Index shows where you stand, where the gaps are, and what to prioritize next to guide your strategic decisions to enhance translation.



### SUBDOMAIN GAP SUMMARY

Largest gaps between your scores and peer medians ● Illinois

Lead in 7, trail in 1, at parity in 2

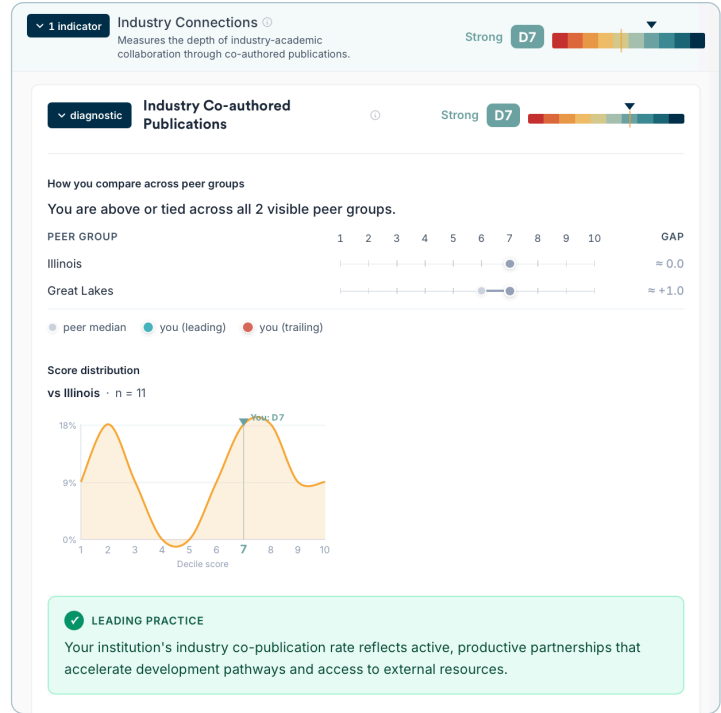
Industry Reputation	<div><div></div></div>	+4
Collaborative & Experienced TTO	<div><div></div></div>	+2
Industry Connections	<div><div></div></div>	+2
Cutting Edge Science	<div><div></div></div>	+1
Funding Support	<div><div></div></div>	+1
TTO Efficiency	<div><div></div></div>	+1
Translational Science & Health Impact	<div><div></div></div>	+1
Entrepreneurial Ecosystem Support	<div><div></div></div>	0
Facilities & Equipment	<div><div></div></div>	0
Faculty Engagement	<div><div></div></div>	-3

### DISCOVERY / TRANSLATION BALANCE

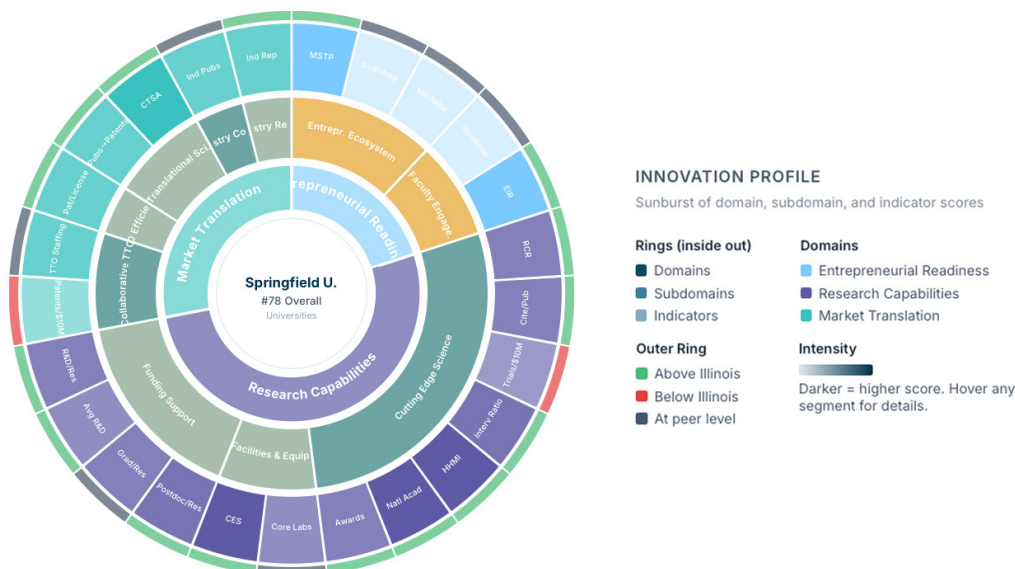
Net orientation across research discovery and market translation

	DISCOVERY	BALANCED	TRANSLATION	
● Springfield U.	<div><div></div></div>			+0.2
● Illinois	<div><div></div></div>			+0.3
● Great Lakes	<div><div></div></div>			-0.1

Score range: -3 (discovery-dominant) to +3 (translation-dominant). Values near 0 indicate balanced investment.



Your innovation profile is a dynamic portrait of the range and intensity of actionable factors informing your translational performance. You will get to understand your institution in a deeper way that more accurately reflects the ability to repeatably translate science to cures



## The Cure Innovation Index tells where you stand, where the gaps are, and what to prioritize next

The Index makes ecosystem and institutional translational performance visible, comparable, and actionable.

For subscribing institutions and their authorized users, Cure offers a customized Benchmark Report and recommendations based on analyses of your institution.

Additional downloadable reports and resources to elevate translational performance are available as part of the Cure membership.

Membership also enables opportunities to engage with founders, prospective investors, and potential partners in the healthcare innovation sector. Members receive curated learning and advisement through dedicated courses on building a healthcare business and can access industry leaders online and at in-person events.

## How Data Drives Index Assessment

The multi-dimensional methodology uses validated data integrated from original and public sources

Led by Cure, the effort to develop the Index included a collaborative team of internal and external subject matter experts from academia, industry, government, and Deerfield Intelligence, a division of Deerfield Management Company, an affiliate of Cure.

The Index uses original data from surveys of more than 3,000 researchers and industry leaders and from institutional audits to assess their infrastructure and capabilities, including laboratory technologies, technology transfer operations, and educational curricula.

Learn more about the Index methodology at:  
[wewillcure.com/insights/innovation-index/methodology](https://wewillcure.com/insights/innovation-index/methodology)

### How can the Cure Innovation Index support your institution's research and innovation strategy?

For more information or a demonstration, contact:

**Anthony Giordano**

SVP of Marketing, Cure

E: [agiordano@cureexperience.com](mailto:agiordano@cureexperience.com)

P: 347.563.3758



For strategic collaboration, contact:

**Seema Kumar**

CEO, Cure

E: [seemakumar@cureexperience.com](mailto:seemakumar@cureexperience.com)

P: 212.692.7118



Cure • 345 Park Avenue South, New York, NY 10010 • [wewillcure.com](https://wewillcure.com)